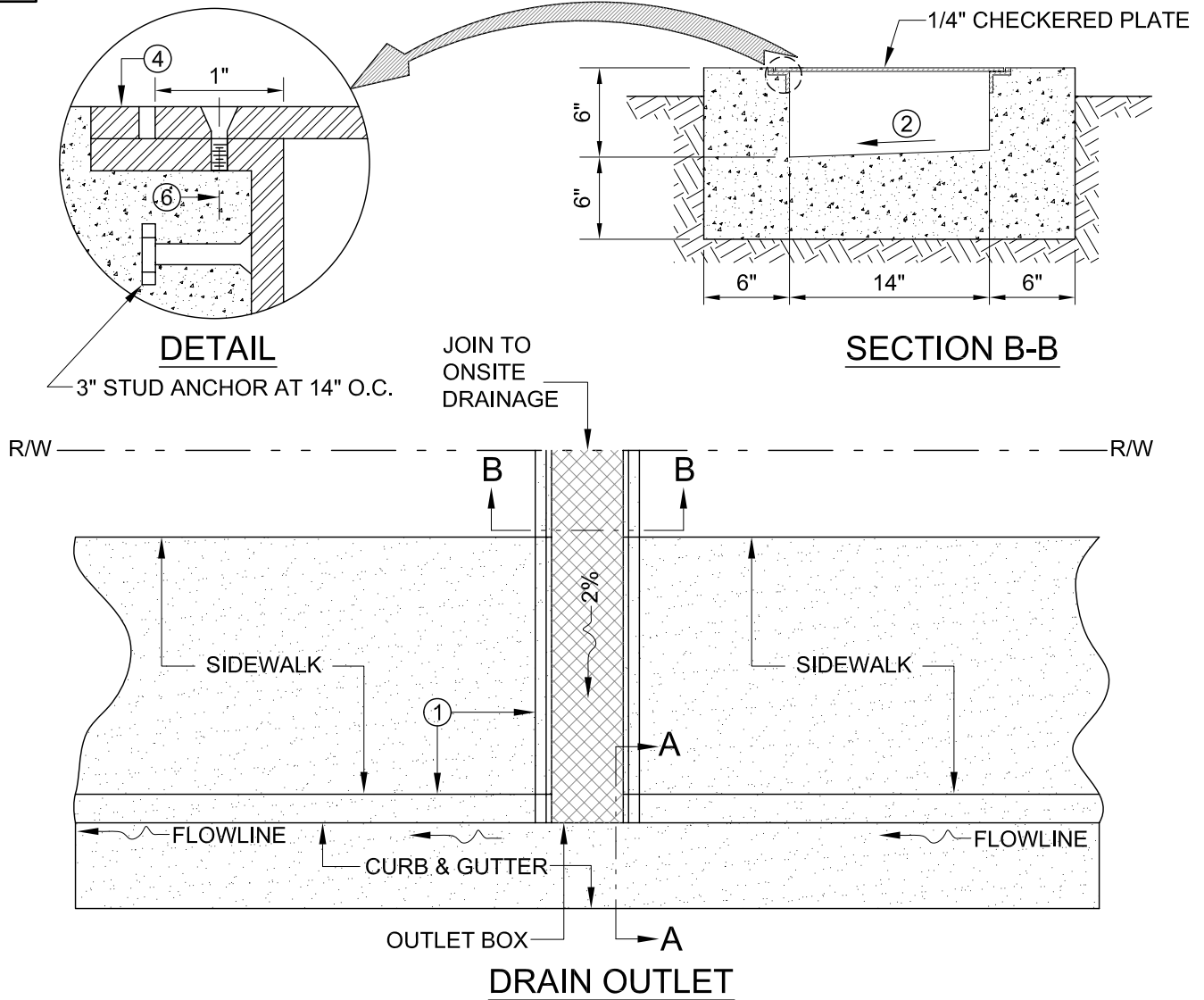
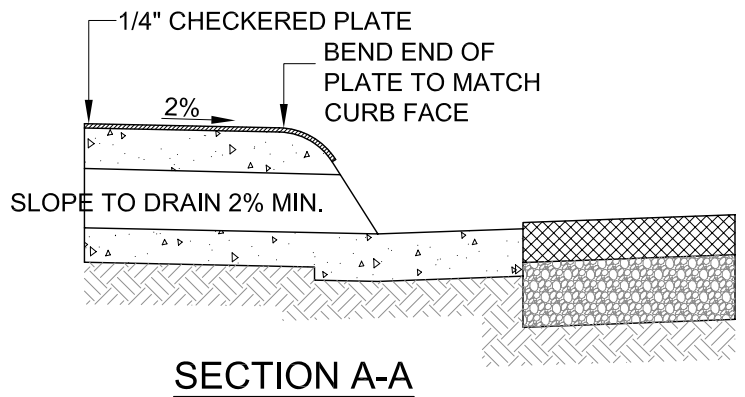


SCALE: N.T.S.



**NOTE**

- ① UNDER SIDEWALK DRAIN NOT PERPENDICULAR TO CURB REQUIRES THE APPROVAL OF THE CITY ENGINEER.
- ② SLOPE TO DRAIN TO ONE SIDE.
- ③ ALL EXPOSED METAL PARTS TO BE GALVANIZED. SCREWS TO BE STAINLESS STEEL GRADE 316.
- ④ 1 1/2" X 1 1/2" X 1/4" "L" FRAME WITH 3/8" X 1/4" STEEL STRIP WELDED TO FRAME.
- ⑤ CHECKERED PLATE SHALL BE GALVANIZED STEEL, MAXIMUM WIDTH 36".
- ⑥ FASTEN WITH 1/4" COARSE-THREAD COUNTERSINK. SCREWS SHALL BE STAINLESS STEEL GRADE 316.



REVISION	DESIGN BY:	DRAWN BY:	DATE
ORIGINAL	AC/JAG	A.C./G.M.	07/02/07

APPROVED BY THE CITY OF EL CENTRO PUBLIC WORKS DEPARTMENT, ENGINEERING DIVISION	
R.C.E. 62028	DATE
JOHN A. GAY, P.E. PUBLIC WORKS/ENGINEERING SENIOR ENGINEER	
R.C.E. 24740	DATE
TERRY L. HAGEN, P.E. DIRECTOR OF PUBLIC WORKS/ENGINEERING	

**CITY OF EL CENTRO**  
PUBLIC WORKS DEPARTMENT

**UNDER SIDEWALK DRAIN  
CAST IN PLACE**

DWG NO. **EC-309**